

# E-Series for Large Trucks.

The electric unit your truck can't resist.

ALL-ELECTRIC, SINGLE- AND MULTI-TEMPERATURE  
REFRIGERATION UNITS FOR LARGE TRUCK TRANSPORT



# Content

## E-SERIES FOR LARGE TRUCKS

<b>Intro</b> How the E-Series gives you the Electric Edge	P. 03
<b>Industry-wide compatibility</b> Match the widest range of large truck models	P. 04
<b>Unrivaled efficiency</b> The most efficient use of electric power	P. 05
<b>Leaner design &amp; lower maintenance</b> Lean design for lower costs and easier access	P. 06
<b>Measurable sustainability</b> Make your total impact tangible	P. 08
<b>Integrated connectivity</b> Keep a constant eye on your electric units	P. 09
<b>MAX YOUR COOL</b> Performance-enhancing services and solutions	P. 10

# The Electric Edge expands.

With a wide range of large truck refrigeration systems, the E-Series expands to intercity distribution. The entire range is specifically designed to support your fleet's electric transition. And now, these new models **bring the best electric performance to any large truck type**, battery electric or engine-driven vehicles.

It's why we say the **E-Series gives you the Electric Edge**. It's knowing you stay ahead of the curve, with **purpose-built technology** that makes zero compromise on power, efficiency or reliability. Not just a step, but a leap forward for your refrigerated fleet.

## ELECTRIC COOLING YOUR TRUCK CAN'T RESIST

- **Efficient electric power**  
All-electric cooling at the lowest possible power use.
- **Lean design with lower maintenance**  
A unique, lean design unlocks lower costs and easier access...
- **Sustainable by nature**  
Reduce and report on your total environmental impact...
- **Real-time connectivity**  
Real-time insights into your refrigeration unit.





100% electric,  
100% compatible.

Match a wide range of both electric and engine-driven large trucks.

**HIGH-VOLTAGE DC FOR FULL-ELECTRIC TRUCKS**

Draw direct power from your BEV's high-voltage battery, ensuring the most efficient power connection without losing energy to an AC conversion.

**ALTERNATOR FOR ENGINE-DRIVEN TRUCKS**

Not ready to go all-electric? On your ICE trucks, an alternator solution is used so you still save fuel while maintaining the ideal temperature.

**E-COOLPAC BATTERY PACK FOR INDEPENDENT OPERATION**

Regardless of your truck type, E-Series can be powered by our E-COOLPAC battery pack to work independently from your truck.



The most efficient use of electric power.

Lose no energy to an AC conversion.

Looking to match your truck with an all-electric cooling unit? The large E-Series delivers **unrivaled cooling capacity and energy efficiency** at 100% electric power, ensuring the lowest possible impact on battery range, operating costs and energy consumption.

**RENOWNED INVERTER TECHNOLOGY**

variable speed architecture allows you to adjust power on demand, leading to unrivaled energy efficiency.

**FAST PULLDOWN**

quickly bring interior temperature back to its setpoint, even with frequent stops and door openings.

**DIRECT BATTERY CONNECTION**

get your power straight from the source and avoid energy losses, no matter your type of truck.



## Leaner design, lower maintenance.

Keep your trucks on the road for longer and reduce maintenance costs. The large truck E-Series' full-electric design trades fuel-related parts for easier serviceability and lower wear and tear.

- Eliminating belts, pulleys and filters results in **minimal maintenance**.
- Best-in-class reliability and service support lead to **higher uptime**.

### SLIMLINE DESIGN FOR GREATER CITY ACCESS

The low truck height design of the unit is uniquely shaped to allow **easier access to low-height places** at distribution points, underground parkings, or below low-hanging bridges. Or, alternatively, you could **increase cabin height to the benefit of your drivers' comfort**.

- Complement low-height truck designs.
- Smoother cabin tilt.
- Easily access urban areas with height restrictions.
- Higher cabins increase driver comfort.

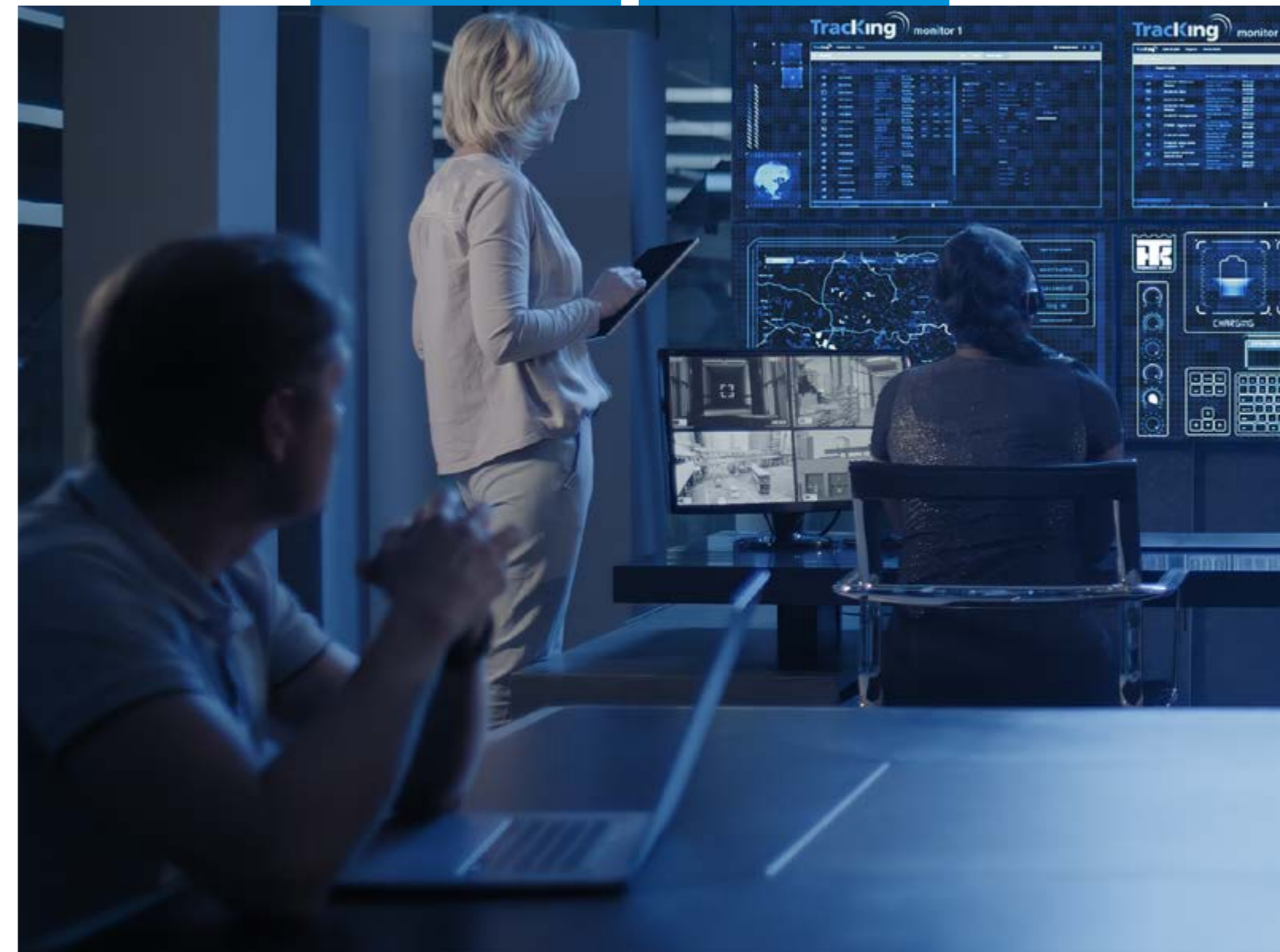
# Silent. Sustainable. Measurable.

The E-Series' full-electric nature comes with **extra low CO<sub>2</sub> and noise emissions**. This means worry-free entry into noise-restricted areas, zero-emission zones (ZEZ), diesel-ban areas etc.

In addition, our **telematics grant you the much needed visibility across your fleet**, with more insights to let you measure your sustainability impact.

## LESS REFRIGERANT LEAKAGE RISKS

- R-452A as a standard.
- Hermetic compressor and smart refrigeration design reduces the risk of refrigerant leakage.



## Real-time connectivity, all the time.

Stay on top of unit,  
power and vehicle data.

Integrated telematics let you log temperature and monitor your assets around the clock. Through alarms and recommended actions, both your team and our technicians can perform predictive maintenance, making your fleet's uptime a top priority.

- Standard **2 years telematics** contract included.
- Accurate **temperature logging** (EN12830) through TouchLog.

# Performance-enhancing services & solutions



Don't settle for less, when you can take it to the max. With a complete range of smart services and digital solutions, Thermo King helps you maximize uptime, sustainability, savings and control all throughout your operations. Keep your unit performance up, and your worries down. All day, every day.

- + MAXIMIZE YOUR UPTIME**  
Avoid costly downtime and keep your units going and earning for longer.
- + MAXIMIZE YOUR SUSTAINABILITY**  
Limit your fleet's footprint and save smart on energy.
- + MAXIMIZE YOUR SAVINGS**  
Reduce service and maintenance costs, and maximize your units' residual value.
- + MAXIMIZE YOUR CONTROL**  
Monitor and maintain critical cargo quality at every step of your journey.

## LOOKING FOR YOUR MAX?

Thermo King's certified dealers are at your service 24/7 and our network is available all across Europe. Visit our website to locate your closest dealer.



Get your max at  
[europe.thermoking.com/  
max-your-cool](https://europe.thermoking.com/max-your-cool)



## Mix and max.

### GAIN MAXIMUM INSIGHT WITH TRACKING TELEMATICS

Keep an eye on your unit while it's out on the road. With Thermo King's Tracking, part of our **Connected Solutions** portfolio, you stay updated on every aspect of your unit, in real-time. Track performance, keep an eye on temperatures and get immediate notification in the case of problems. **Two-way communication** allows you to respond quickly and remotely change settings when needed.

Every E-Series unit includes a **free two-year subscription** to our Connected Solutions service. Included in the purchase price are all the hardware and software needed to get the service up and running from day one.

With a complete range of smart services and digital solutions, Thermo King helps you **maximize your uptime, sustainability, savings, and control** throughout your operations. From industry-leading telematics to customizable service agreements and performance-enhancing upgrades. **Explore the building blocks of our integrated portfolio right below.**



**CONNECTED SOLUTIONS**  
Proactively **manage** your fleet and **monitor** your unit and cargo conditions from any location.



**UPGRADES**  
**Enhance fleet performance** with a vast array of original Thermo King upgrades.



**SERVICE CONTRACTS**  
Maximize **uptime** with quality maintenance, fast response times and 24/7 dealer support.



**GENUINE PARTS**  
Avoid the costs of poor repairs and insist on **genuine replacement** and **remanufactured parts**.

E-SERIES

# All-electric refrigeration units for large truck transport.

## REAL-TIME CONNECTIVITY, ALL THE TIME

Integrated telematics let you keep a constant eye on your electric units and vehicles, with critical focus on battery and power data.

## LEANER DESIGN, LOWER MAINTENANCE

Fewer components, a unique design and a drastic cut in maintenance needs get you to your destinations, faster and with less costs involved.

## THE MOST EFFICIENT USE OF ELECTRIC POWER

Purpose-built technology gives you unrivaled cooling capacity and temperature control accuracy for the lowest possible impact on battery range, operating costs and energy consumption.

## SUSTAINABLE BY NATURE

Reduce noise and CO<sub>2</sub> emissions during deliveries, and accurately measure the impact you are making



Head to [europe.thermoking.com](https://europe.thermoking.com) to find out more!



Thermo King – by Trane Technologies (NYSE: TT), a global climate innovator – is a worldwide leader in sustainable transport temperature control solutions. Thermo King has been providing transport temperature control solutions for a variety of applications, including trailers, truck bodies, buses, air, shipboard containers and railway cars since 1938.

For further information  
[europe.thermoking.com](https://europe.thermoking.com)

Find your nearest dealer on  
[dealers.thermoking.com](https://dealers.thermoking.com)

Thermo King Europe – Lenneke Marelaan 6, B-1932 Sint-Stevens-Woluwe, Belgium  
© 2024 Thermo King Europe TK 80100 (09-2024) -EN

